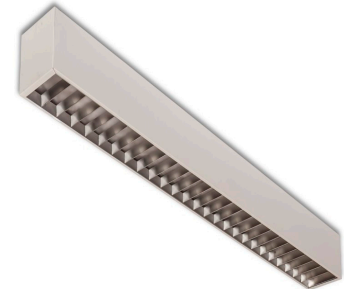


JOB _____
 TYPE _____
 CATALOG # _____



SUN4LED SUN6LED SERIES



SURFACE MOUNTED NARROW LED LINEAR LUMINAIRE WITH LOUVER AND LENS OPTION

APPLICATION

- HIGH QUALITY LOUVERED SURFACE LUMINAIRE IS DESIGNED AS A COMPLIMENTARY LIGHTING SOURCE FOR DISTINCTIVE ARCHITECTURAL INTERIORS.
- INDIVIDUALLY MOUNTED ONLY. IDEAL FOR USE IN CORRIDORS, LOBBIES AND OFFICES.
- HOUSING IS AVAILABLE IN NARROW 6" OR VERY NARROW 4" WIDTHS.
- AVAILABLE WITH VARIOUS LENS AND LOUVER OPTIONS.

FINISH

- ALL METAL PARTS PRETREATED WITH A PHOSPHATE BONDING PROCESS AND POST PAINTED WITH AN ELECTROSTATICALLY APPLIED HIGH TEMPERATURE BAKED ENAMEL FOR SUPERIOR QUALITY AND DURABILITY.
- CUSTOM COLORS AVAILABLE UPON REQUEST.

CONSTRUCTION

- CORNERS INTERNALLY OVERLAPPED AND WELDED FOR CRISP APPEARANCE AND TO PREVENT LIGHT LEAKAGE.
- LOUVER OR LENS IS EASILY REMOVED IN A LIFT-AND-SHIFT MANNER.
- 3/4" ANODIZED ALUMINUM LOUVER PROVIDES MAXIMUM PHOTOMETRIC EFFICIENCY WITH SUPERIOR BRIGHTNESS CONTROL.
- ASSORTMENT OF LOUVER FINISHES AVAILABLE.
- INTERNAL REFLECTOR IS DESIGNED TO CREATE EVEN ILLUMINATION WHILE IMPROVING OVERALL EFFICIENCY.

ELECTRICAL

- LISTED
- SUITABLE FOR DRY LOCATIONS. (DAMP OPTIONAL)
- I.B.E.W. LABELED.
- 5 YEAR LIMITED WARRANTY ON LED BOARDS AND DRIVERS.
- 0-10V DIMMING STANDARD*
- LUMEN/WATTAGE TUNING AVAILABLE.
(CONTACT FACTORY FOR OPTIONS)
- DRIVER QUICK DISCONNECT STANDARD WHERE REQUIRED BY CODE.
- 80+ CRI STD. CONSULT FACTORY FOR 90 CRI LUMEN PACKAGE OPTIONS

ORDERING GUIDE

EXAMPLE: SUN4LED38L4K48-9BL-WR

SERIES	LUMENS	KELVINS	FIX			
SUN4LED SUN6LED	30L ¹	3K,	48	**LUMENS: 30L = 3000 RATED INITIAL FIXTURE LUMENS (39WATT) ² 39L = 3900 RATED INITIAL FIXTURE LUMENS (53WATT) ² 29L = 2900 RATED INITIAL FIXTURE LUMENS (39WATT) ³ 38L = 3800 RATED INITIAL FIXTURE LUMENS (53WATT) ³	CUSTOM FINISHES: ANY "RAL" PAINT COLOR OR SELECTED PAINTED PATTERN FINISH AVAILABLE AS FINISH OPTION. OPTIONS: EM1 - 500 - 700 LUMEN BATTERY PACK EM2 - 1100 - 1400 LUMEN BATTERY PACK DM1 - 0-10V DIMMING TO 1% (*DIMMING TO 3% STANDARD) SDIM - STEP DIMMING. (CONSULT FACTORY FOR LUMEN PACKAGE OPTIONS) DL - DAMP LOCATION 90 - 90 CRI NOTE: 1 = AVAILABLE WITH "DF" LENS AND "BL" AND "WBL" OPTIONS 2 = WATTAGE OF CONFIGURATION WITH "BL" AND "WBL" LOUVER AT 4000K 3 = WATTAGE OF CONFIGURATION WITH "DF" LENS AT 4000K (SEE CHART FOR LUMEN MULTIPLIERS FOR OTHER CCT'S) (CONTACT FACTORY FOR OTHER LUMEN/WATTAGE OPTIONS)	
	29L ¹	4K,				96
38L ¹	5K	KELVIN: 3K = 3,000 KELVIN 35K = 3,500 KELVIN 4K = 4,000 KELVIN 5K = 5,000 KELVIN VOLTAGE: 5 - 347V 9- 120-277 LENS/ LOUVERS: DF - DURA FROST TEXTURED BOTH SIDES (85%) OA - SMOOTH OPAL ACRYLIC(58%) BL - SEMI-SPECULAR PARABOLIC LOUVER WBL - WHITE PARABOLIC LOUVER REFLECTORS: WR - WHITE PAINTED				
** LUMEN MULTIPLIERS FOR VARIOUS CCT'S						
CCT	LUMEN MULTIPLIER					
3000K	0.938					
3500K	0.967					
4000K	1.000					
5000K	1.041					



LUMAX INDUSTRIES, INC. Chestnut Avenue & Fourth Street
 Altoona, PA 16603-0991 814-944-2537 Fax 814-944-6413
 www.lumaxlighting.com



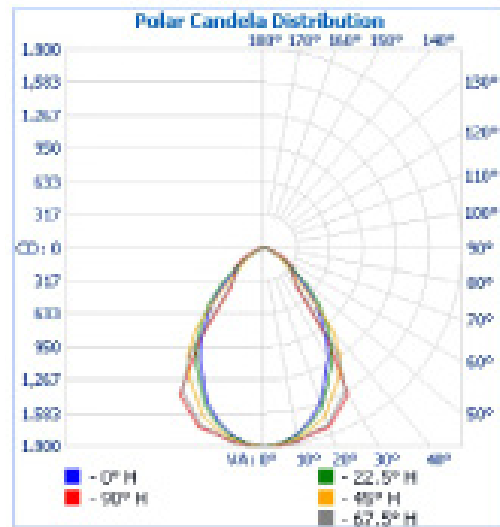


SUN4LED SUN6LED

PHOTOMETRIC DATA

CATALOG NUMBER: SUN6LED30L4K48-9BL
TOTAL FIXTURE LUMENS: 2926.6

Zonal Lumen Summary		
Zone	Lumens	% Luminaire
0-30	1,397.8	47.8%
0-45	2,394.2	71.9%
0-60	2,792.1	95.4%
60-90	174.5	4.6%
70-100	32.1	1.1%
90-120	0	0%
0-90	2,926.6	100%
90-180	0	0%
0-180	2,926.6	100%



Coefficients Of Utilization - Zonal Cavity Method

Effective Floor Cavity Reflectance: 20%

RCR %:	Effective Floor Cavity Reflectance: 20%																				
	80°			70°			50°			30°			10°								
ROW %:	20	30	38	0	20	30	38	0	20	30	38	0	20	30	38	0	20	30	38	0	
RCR: 0	1.39	1.19	1.19	1.39	1.38	1.18	1.18	1.00	1.11	1.11	1.11	1.06	1.06	1.06	1.02	1.02	1.02	1.00			
1	1.12	1.09	1.08	1.03	1.09	1.06	1.04	.91	1.02	1.00	.98	.99	.97	.95	.95	.94	.93	.98			
2	1.05	.99	.94	.89	1.02	.97	.93	.82	.94	.90	.86	.90	.87	.85	.88	.85	.83	.84			
3	.98	.90	.84	.79	.96	.88	.83	.74	.86	.81	.77	.83	.79	.75	.81	.77	.74	.72			
4	.91	.82	.75	.70	.89	.81	.74	.68	.79	.73	.69	.76	.72	.68	.74	.70	.67	.65			
5	.85	.75	.68	.63	.83	.74	.67	.63	.72	.66	.62	.70	.65	.61	.69	.64	.60	.59			
6	.80	.69	.62	.56	.78	.69	.61	.55	.66	.60	.56	.65	.60	.55	.64	.59	.55	.53			
7	.75	.64	.56	.51	.73	.63	.56	.50	.62	.55	.51	.60	.55	.51	.59	.54	.50	.49			
8	.70	.59	.52	.47	.69	.59	.52	.46	.57	.51	.47	.56	.50	.46	.55	.50	.46	.44			
9	.66	.55	.48	.43	.65	.54	.48	.42	.53	.47	.43	.52	.47	.43	.51	.46	.42	.41			
10	.63	.51	.44	.40	.61	.51	.44	.39	.50	.44	.40	.49	.43	.39	.48	.43	.39	.38			

DIMENSIONS

SPECIFICATIONS AND DIMENSIONAL DATA SUBJECT TO CHANGE WITHOUT NOTICE.

