

JOB _____
 TYPE _____
 CATALOG # _____



APPLICATION

- HEAVY-DUTY, GENERAL PURPOSE FIXTURE FOR WAREHOUSES, FACTORIES AND RETAIL APPLICATION.
- BROAD SELECTION OF LAMP STYLES, 4 AND 8 FOOT SIZES, 16 FOOT TANDEM UNITS.
- CAN BE SURFACE, CHAIN OR PENDANT MOUNTED INDIVIDUALLY OR IN CONTINUOUS ROWS.

FINISH

- ALL EXPOSED METAL PARTS PRETREATED WITH A PHOSPHATE BONDING PROCESS AND POST-PAINTED WITH AN ELECTROSTATICALLY APPLIED HIGH TEMPERATURE BAKED WHITE ENAMEL FOR SUPERIOR QUALITY AND DURABILITY.

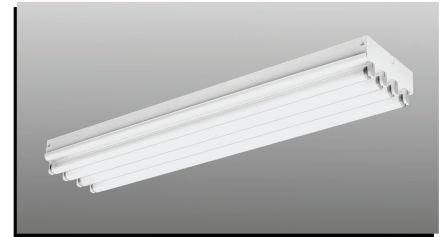
CONSTRUCTION

- DIE-FORMED CODE GAUGE COLD ROLLED STEEL HOUSING FOR STRENGTH AND UNIFORMITY. SNAP-ON BALLAST COVER SECURED WITH SPRING CLIPS ON 4 5/16" MODEL WHILE 10" MODEL BALLAST COVER IS SECURED WITH QUARTER TURN FASTENERS, ALLOWING NO-TOOL ACCESS FOR WIRING AND MAINTENANCE. KNOCKOUTS ON HOUSING TOP AND ENDS FOR MOUNTING AND ELECTRICAL CONNECTIONS.
- ACCESSORIES INCLUDE: ASYMMETRIC AND SYMMETRIC REFLECTORS AS WELL AS WIRE GUARDS.
- OPTIONAL QUICK-CONNECT WIRING SYSTEM FOR CONTINUOUS ROW INSTALLATION. OPTIONAL EXTENDED END PLATES FOR SOCKET PROTECTION.

ELECTRICAL

- STANDARD BALLAST IS ELECTRONIC, HPF, CLASS P, AND UL LISTED UNNIVERSAL VOLTAGE.
- LISTED LISTED.
- SUITABLE FOR DAMP LOCATIONS.
- I.B.E.W LABELED.

**CD
SERIES**



**DEEP
CHANNEL-MATE**

ORDERING GUIDE EXAMPLE: CD33248-CO1U

SERIES	LMP	WATTS	FIXT		OPTIONS
CD	1,2,3,4	32-32w T8	48	BALLAST: 1 OR 2 LAMPS: EO - ONE BALLAST 3+ LAMPS: EO - TWO BALLASTS, WIRED INBOARD/OUTBOARD (OR CUSTOMER SPECIFIED) CO - ONE BALLAST SPECIFIC BALLASTS: HL - HIGH BALLAST FACTOR LW - LOW BALLAST FACTOR PSP - PROGRAM START, PARALLEL WIRING PRS - PROGRAMMED RAPID START BALLAST (STD ON T5) DL - DIMMING, LUTRON DA - DIMMING, ADVANCE DO - DIMMING, OSRAM DU - DIMMING, UTL (SPECIFY VENDOR'S PRODUCT CATALOG DESCRIPTION) VOLTAGE: 1 - 120 7 - 480 4 - 277 8 - 347-480 5 - 347 9 - 120-277 PACKAGING: B - BULK PACKED U - INDIVIDUALLY PACKED	ALUM - ALUMINUM 2G - 20 GAUGE CRS HSG. & ENDS WIDE - WIDE CHANNEL (10" WIDE) MODELS AVAILABLE EMERGENCY BALLASTS: EM1 - 1 LAMP (500-600 LUMENS) EM1A - 1 LAMP (350-450 LUMENS) EM2 - 2 LAMPS (1100-1400 LUMENS) EM2A - 2 LAMPS (600-700 LUMENS) EM3 - 1 LAMP (600-700 LUMENS), 2 HOURS MATE - N - LOCK: MNL2 - MATE AND LOCK PLUG-IN WIRING SYSTEM - ONE CIRCUIT MNL3 - MATE AND LOCK PLUG-IN WIRING SYSTEM - TWO CIRCUITS ACCESSORIES: XP - EXTENDED END PLATES FOR SOCKET PROTECTION 2181P - STANDARD CHANNEL HANGER FOR NARROW HOUSING, FLUSH TO T-BAR CEILING 2182P - 1.5" SPACER CHANNEL HANGER FOR 800 & 1500 MA FIXTURES 3569P - FLUSH HANGER FOR 10" MODEL 2205P - 1/2" HANGER/SPACER FOR 10" MODEL 3483P - 3" HANGER/SPACER FOR 10" MODEL Note: CSWG48 - WIREGUARD 48" LENGTH, PLATED STEEL (NARROW HSG) CDWG48 - WIREGUARD 48" LENGTH, PLATED STEEL (WIDE HSG) RE48 - ASYMMETRIC REFLECTOR, 48" LENGTH RE96 - SYMMETRIC REFLECTOR, (2) 48" LENGTH (ORDER QUANTITY FOR BOTH SIDES OF FIXTURE)
	2,4,6,8	32-32w T8	96		
	1,2,3,4 1,2,3,4	59-59wT8 86-86wT8HO			



LUMAX INDUSTRIES, INC. Chestnut Avenue & Fourth Street
 Altoona, PA 16603-0991 814-944-2537 Fax 814-944-6413
 www.lumaxlighting.com



LUMAX LIGHTING®

CD SERIES

PHOTOMETRIC DATA

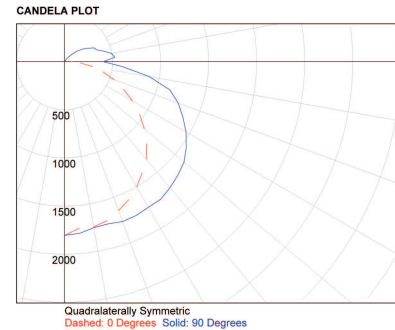
CATALOG NUMBER: **CD33248-CO1U**

LAMPS: THREE F32T8-SP41 EACH RATED AT 2900 LUMENS

TOTAL LUMINAIRE EFFICIENCY = 92.3%

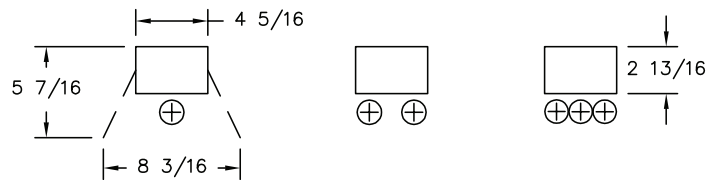
Zonal Lumen Summary			
Zone	Lumens	%Lamp	%Fixt
0-30	1438.5	16.5	17.9
0-40	2436	28	30.3
0-60	4713.6	54.2	58.7
0-90	7156.6	82.3	89.2
90-180	870.5	10	10.8
0-180	8027.1	92.3	100

Coefficients of Utilization-Zonal Cavity Method																								
Effective Floor Reflectance 20%																								
RC	80%				70%				50%				30%				10%				0%			
RW	70%	50%	30%	10%	70%	50%	30%	10%	70%	50%	30%	10%	70%	50%	30%	10%	70%	50%	30%	10%	70%	50%	30%	10%
0	107	107	107	107	104	104	104	104	97	97	97	91	91	91	85	85	85	82	82	82	82	82	82	82
1	95	90	85	81	92	87	82	78	81	77	74	76	73	70	71	68	66	63	63	63	63	63	63	63
2	85	77	59	53	82	74	67	62	69	63	59	64	60	56	60	56	53	50	50	50	50	50	50	50
3	77	66	58	51	74	64	56	50	60	53	48	56	50	46	52	47	43	41	41	41	41	41	41	41
4	70	58	49	42	67	56	48	41	52	45	40	49	43	38	46	41	36	34	34	34	34	34	34	34
5	64	51	42	36	61	50	41	35	46	39	34	44	37	32	41	35	31	29	29	29	29	29	29	29
6	59	46	37	31	56	44	36	30	42	34	29	39	33	28	37	31	27	25	25	25	25	25	25	25
7	55	41	33	28	52	40	32	26	38	31	25	35	29	25	33	28	24	22	22	22	22	22	22	22
8	51	37	29	24	49	36	29	23	34	27	22	32	26	22	31	25	21	19	19	19	19	19	19	19
9	47	34	26	21	45	33	26	21	31	25	20	30	24	19	28	23	19	17	17	17	17	17	17	17
10	44	31	24	19	42	31	23	19	29	23	18	27	22	18	26	21	17	15	15	15	15	15	15	15



DIMENSIONS

SPECIFICATIONS AND DIMENSIONAL DATA SUBJECT TO CHANGE WITHOUT NOTICE.



-WIDE OPTION

